

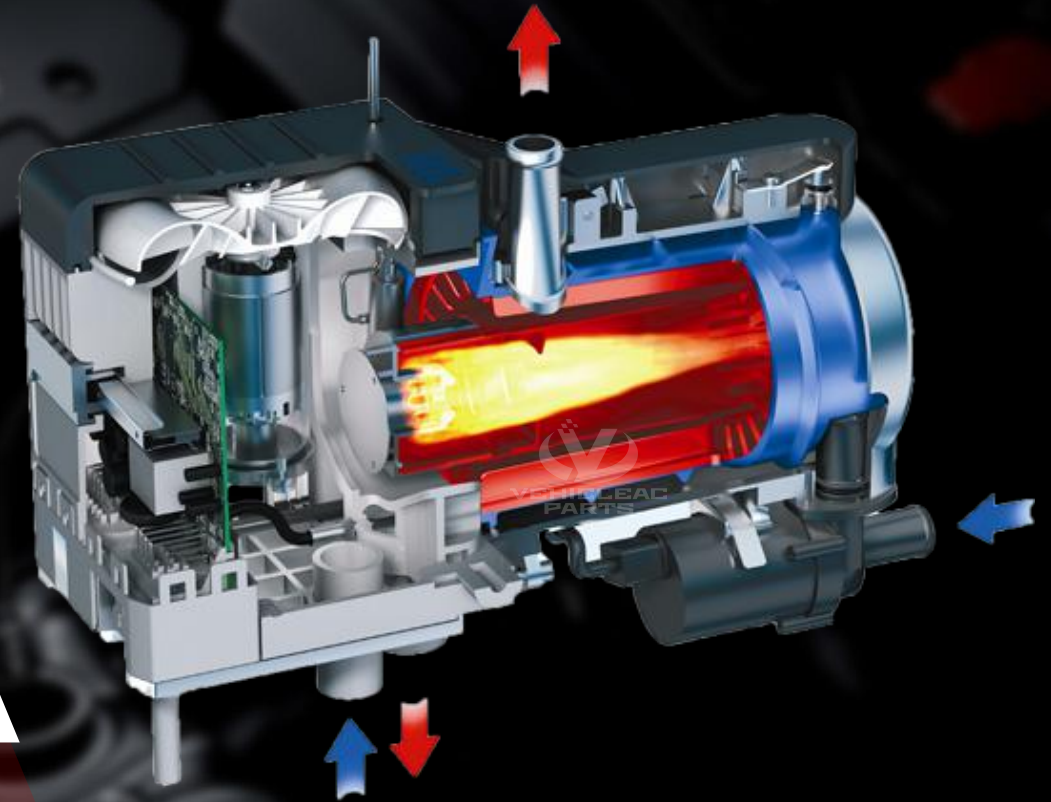
Way of heating, created by VehicleAC

CREATE YOUR HEATING EXPERIENCE



# M-DW 8-12 Fuel Liquid Heater

It is more suitable for the working conditions  
in China, and has a heating system of German quality



# Directory



## 简介

INTRODUCTION

## 八大技术特性

EIGHT TECHNICAL CHARACTERISTICS

## 参数

PARAMETER

## 应用场景

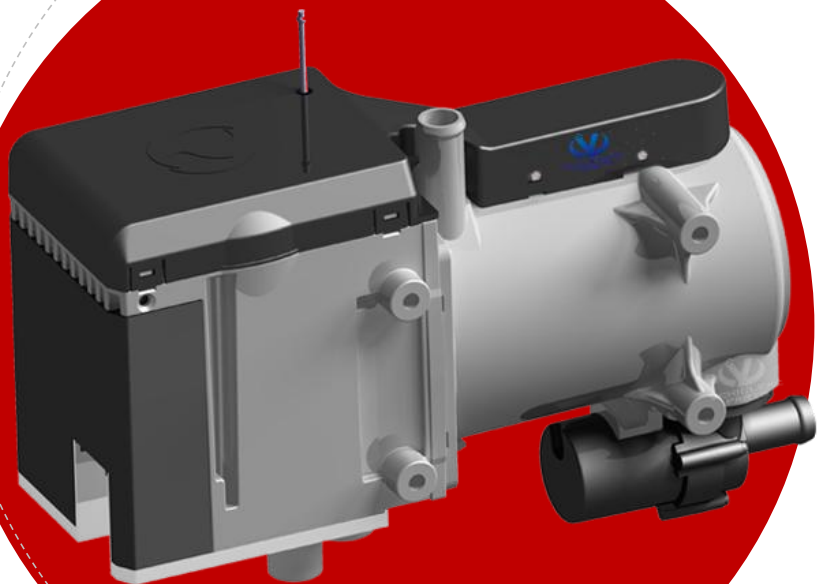
Application scenario

## 安装尺寸

INSTALLATION SIZE

## 使命

MISSION



01

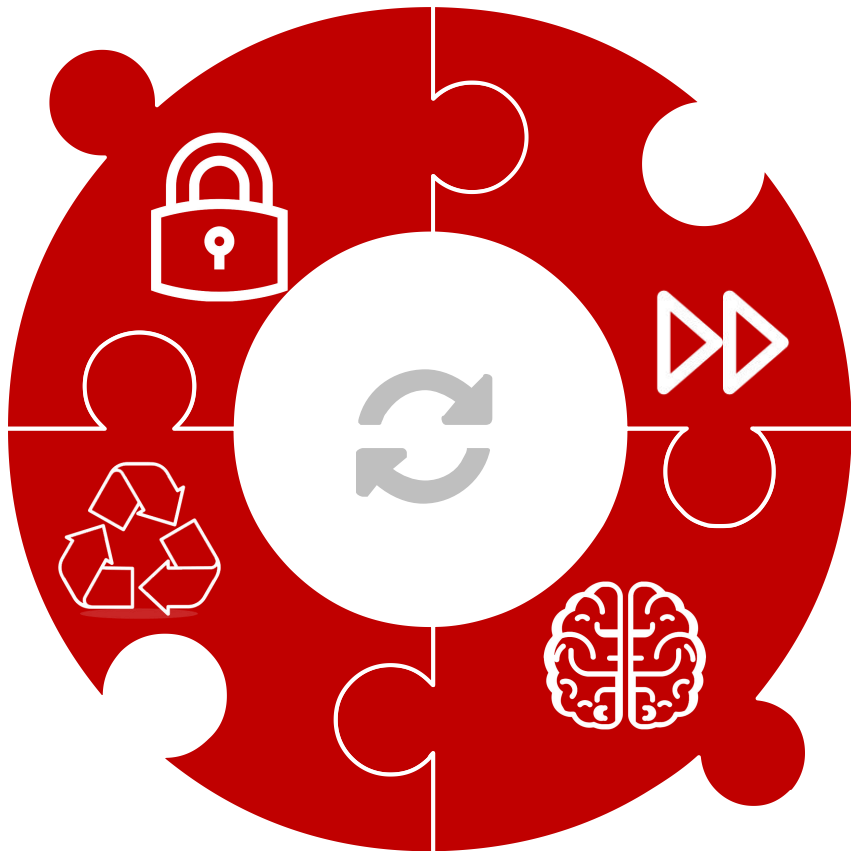
# 产品简介

Product INTRODUCTION

CREATE YOUR HEATING EXPERIENCE

# M-DW8-12 HEATER INTRODUCTION

INTRODUCTION OF BW5/DW5 HEATER



## SAFETY

The new structure and intelligent control design, ensure that the heater is safer and more reliable.

## ECO

The whole heater adopts aluminum die-casting materials and re-cyclable environmental protection materials, so that the whole machine is environmentally friendly.

The latest dual ignition plug design combustion structure makes combustion more complete and emissions are more environmentally friendly.

## Smart

The use of CAN chip with excellent performance realizes the intelligent communication control and editability of the heater. According to the needs of different customers, it can realize the intelligent remote control of the start and stop of the heater, making the heater start at low temperature more convenient.

## Efficient

The heater is build in with the most advanced heater combustion chamber structure and aluminum die-casting heat exchange structure, to make burning more fully, and heat exchange more efficient. At the same time, it is matched with the VehicleAC's intelligent frequency conversion temperature control system, so that let the heater know how to match the output of heat flow. Really realize energy saving and high efficiency.

02

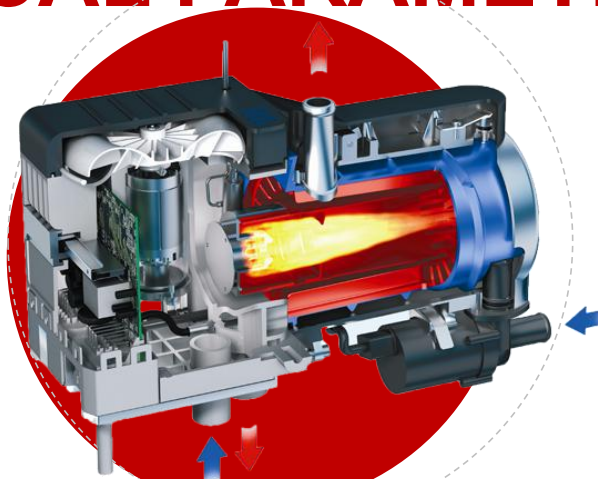
# 选型参数

SELECTION PARAMETERS

CREATE YOUR HEATING EXPERIENCE

# M-DW8-12 TECHNICAL PARAMETERS

DW8-12 HEATER PARAMETERS



| Technical Parameters   | M-DW8              |      |      |      | M-DW10 |      |      |     | M-DW12 |      |      |      |      |      |
|------------------------|--------------------|------|------|------|--------|------|------|-----|--------|------|------|------|------|------|
| Voltage (V)            | 12/24              |      |      |      | 12/24  |      |      |     | 12/24  |      |      |      |      |      |
| Heating Grade          | I                  | II   | III  | IV   | I      | II   | III  | IV  | I      | II1  | II2  | II3  | III  | IV   |
| Heating Power (KW)     | 1.5                | 3.2  | 5    | 8    | 1.5    | 3.5  | 8    | 9.5 | 1.2    | 1.5  | 3.5  | 5    | 9.5  | 12   |
| Water Flow Rate (L/H)  | 1400 about 0.14bar |      |      |      |        |      |      |     |        |      |      |      |      |      |
| Power Consumption (W)  | 35                 | 39   | 46   | 55   | 35     | 39   | 60   | 86  | 34     | 35   | 39   | 46   | 86   | 132  |
| Fuel Consumption (L/H) | 0.18               | 0.40 | 0.65 | 0.90 | 0.18   | 0.40 | 0.90 | 1.2 | 0.18   | 0.18 | 0.40 | 0.65 | 1.20 | 1.50 |
| Dimension (MM)         | 331*138*174        |      |      |      |        |      |      |     |        |      |      |      |      |      |
| Weight (KG)            | 6.2                |      |      |      |        |      |      |     |        |      |      |      |      |      |

03

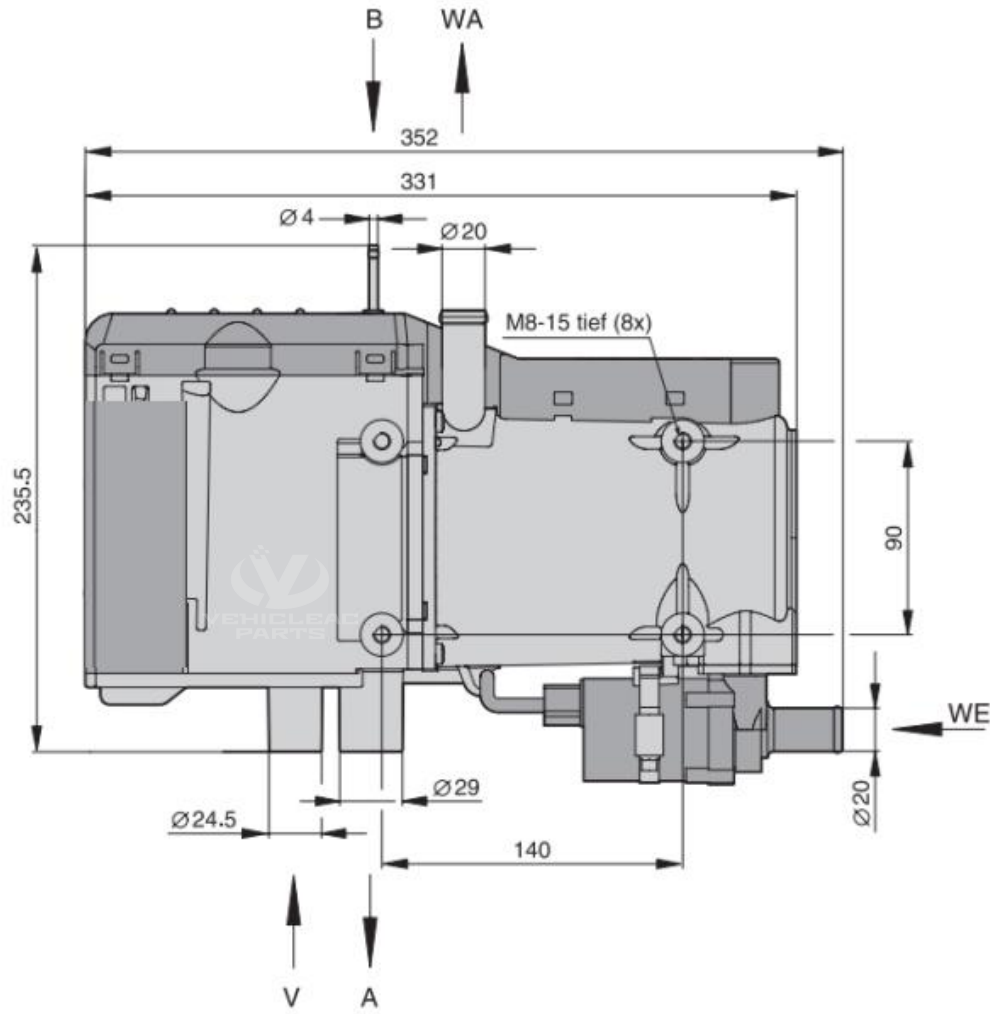
# 安装尺寸

INSTALLATION SIZE

CREATE YOUR HEATING EXPERIENCE

# M-DW 8-12 HEATER Installation Size

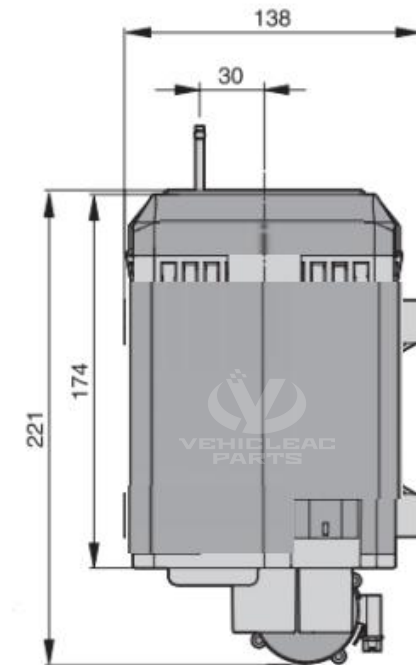
DW8-12 HEATER INSTALLATION DIMENSIONS



## Installation Size

- A: Exhaust Gas
- B: Fuel
- V: Combustion Air
- WA: Water Outlet
- WE: Water Inlet

\*The size in the figure is the standard size, and the specific product size is subject to the technically determined picture.





04

八大  
技术特性

EIGHT TECHNICAL  
CHARACTERISTICS

CREATE YOUR HEATING EXPERIENCE

# M-DW 8-12 8 TECHNICAL CHARACTERISTICS

EIGHT TECHNICAL CHARACTERISTICS OF BW5/DW5 HEATER



## Core electrical controls

Using brushless motor, quantitative electromagnetic pump, brushless magnetic water pump, imported ignition plug, etc., while providing a comfortable application experience, ensuring product life and reliability

## Combustion chamber structure

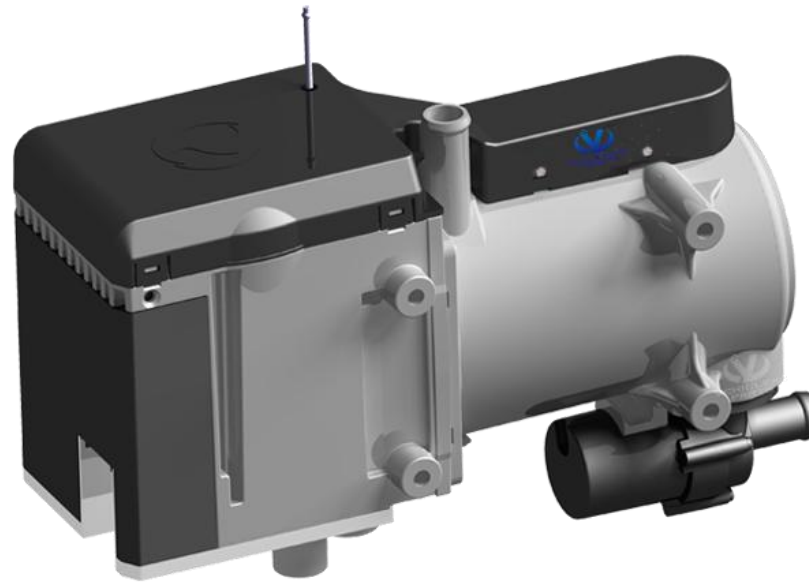
The new type two-stage combustion chamber structure design makes the combustion more fully and stable.

## CAN CHIP

Intelligent control system using CAN chip, optional timer, LCD control panel, mobile phone remote control, remote control, etc.;

## Plateau Mode

Optional plateau components, adapt to ambient temperature of  $-40^{\circ}\text{C}$  to  $+40^{\circ}\text{C}$ , adaptively adjust the gas mixture ratio below 5500 meters altitude, stable operating conditions without smoke and low emissions;



## Lightweight aluminum body

Lightweight all-aluminum body, environmentally friendly materials, efficient heat exchange. Weight reduction by 50%, heat exchange efficiency increased by 20%

## Double-sided installation

Double mounting surface design, More adaptable, and can meet various installation requirements.

## Multiple Models

8KW, 10KW, 12KW DC12V, DC24V, and a variety of models with the same external dimensions are available, fully satisfying various use environments;

## Certification

The products have passed E-mark and CE certification, and the quality meets the requirements of the European market; it can meet the export needs;

# M-DW 8-12 Detailed Characteristics

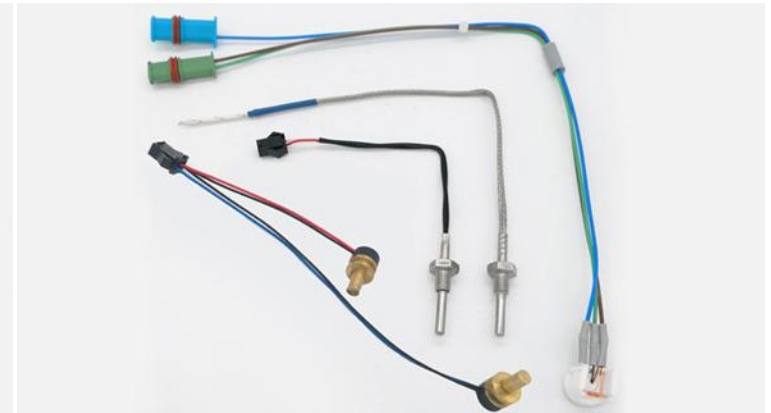
BW5/DW5 HEATER CHARACTERISTICS EXPLAINED



**CAN Communication Chip**



**Brushless magnetic water pump**



**Imported Sensor Element**



The chip control system based on CAN communication realizes precise control of the heater and instant communication of data. At the same time, remote control can be realized.



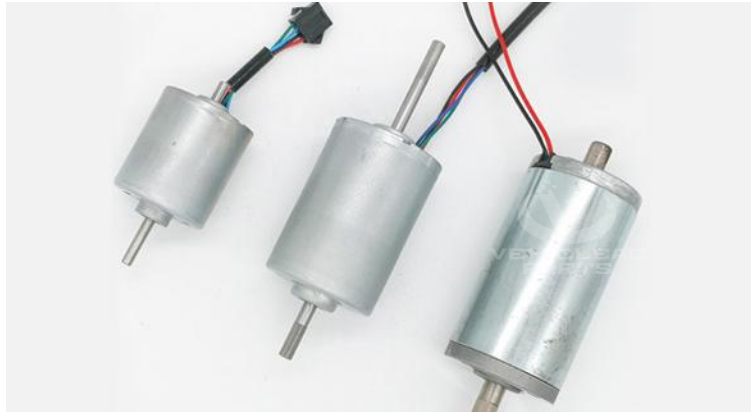
Brushless magnetic water pump is used to solve the problem of water pump leakage and increase the life of the water pump.



Imported sensor elements are used to ensure the precise control of the heater while improving the reliability and service life of the heater.

# M-DW 8-12 Detailed Characteristics

BW5/DW5 HEATER CHARACTERISTICS EXPLAINED



**Brushless Motor**



**Electromagnetic Oil Pump**



**Patented - Combustion Chamber**



The main motor is a brushless motor manufactured by an internationally renowned brand. The main motor life of the heater is increased by more than 5 times, and the long-life motor can reach more than 30,000 hours.



Electromagnetic oil pumps with different characteristics can be matched and used according to different operating conditions.



1. Double ignition plug design: to ensure ignition reliability, and combustion stability; it solves the shortcomings of traditional heater shutdown and smoke.
2. New type of volatile atomization structure: fast fuel atomization and high combustion stability; adopt two-stage combustion structure, more reliable combustion.
3. Combustion chamber material: 310 stainless steel castings and pipes are used, with the service life is more than 10 years.

# M-DW 8-12 Detailed Characteristics

BW5/DW5 HEATER CHARACTERISTICS EXPLAINED



**Patented - Lightweight Body**

**Patented - Double-sided Installation Structure**



Lightweight all-aluminum body, environmentally friendly materials, efficient heat exchange. Weight reduction by 50%, heat exchange efficiency increased by 20%



Symmetrical installation design on both sides, More adaptability, smaller installation space.

05

# 应用场景

APPLICATION SCENARIO

CREATE YOUR HEATING EXPERIENCE

# M-DW 8-12 HEATER APPLICATION

BW5/DW5 HEATER APPLICATION SCENARIO



Engineering  
Vehicle

1. Used for low temperature start of engineering vehicle



2. Used for engineering vehicle's cab heating

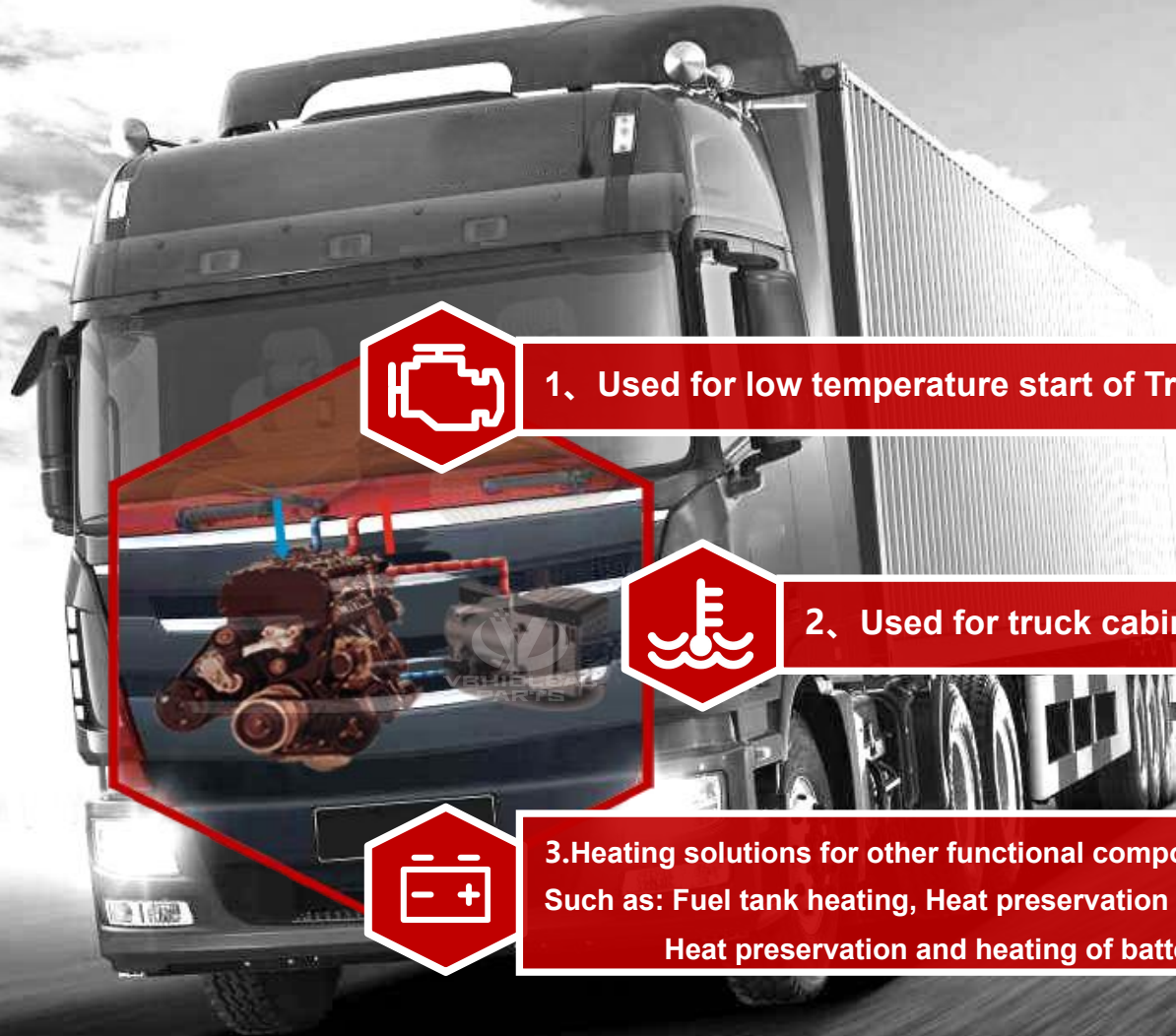


3. Heating solutions for other functional components or design requirements  
Such as: Fuel tank heating, Heat preservation heater for gearbox and  
Heat preservation and heating of battery pack, etc.



# M-DW 8-12 HEATER APPLICATION

BW5/DW5 HEATER APPLICATION SCHEMATIC



1、 Used for low temperature start of Truck



2、 Used for truck cabin heating

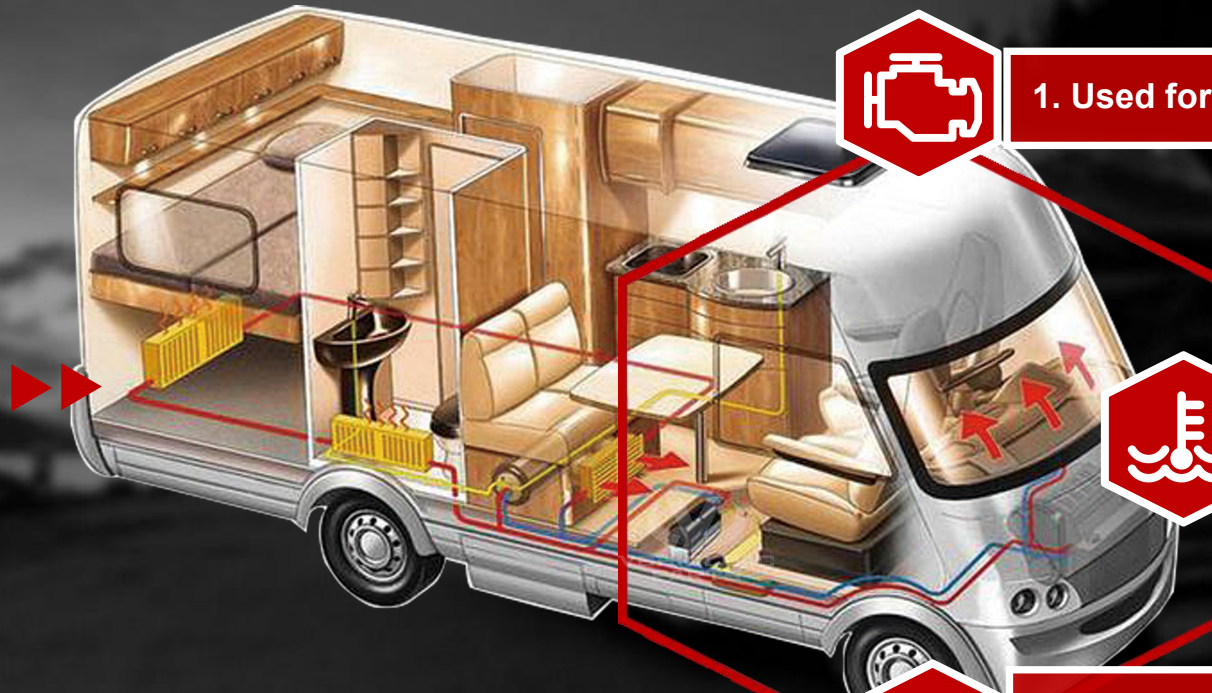


3. Heating solutions for other functional components or design requirements  
Such as: Fuel tank heating, Heat preservation heater for gearbox and  
Heat preservation and heating of battery pack, etc.



# M-DW 8-12 HEATER APPLICATION

BW5/DW5 HEATER APPLICATION SCENARIO



1. Used for low temperature start of RV



2. Used for RV parking & driving heating



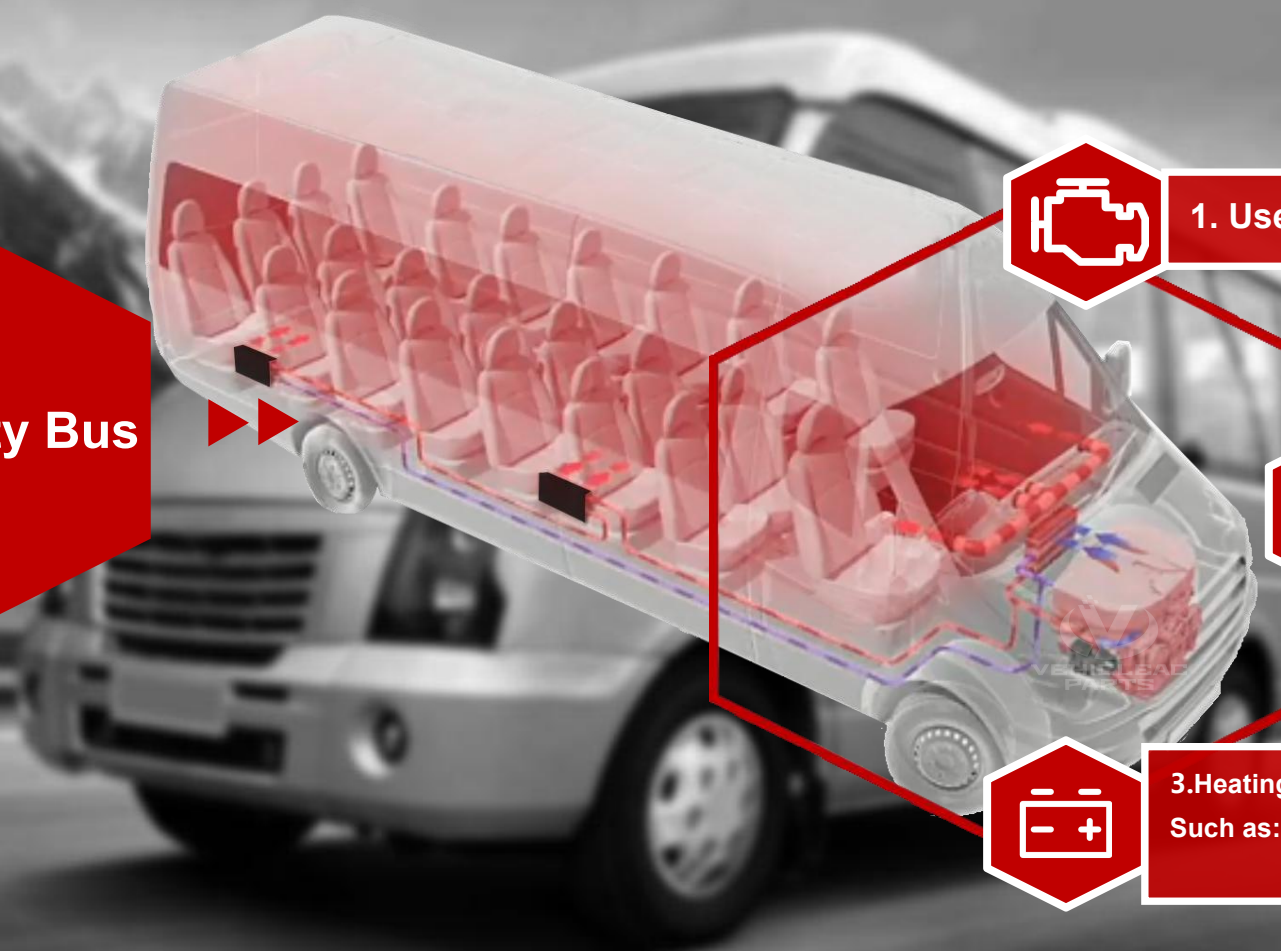
Heating solutions for other functional components or design requirements  
Such as: heating of domestic water (bath water),  
Heat preservation and heating of battery pack, etc.

# M-DW 8-12 HEATER APPLICATION

DW8-12 HEATER APPLICATION SCENARIO



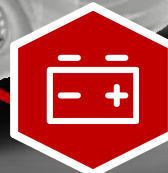
Light-duty Bus



1. Used for low temperature start of light-duty bus



2. Used for bus driver cabin heating



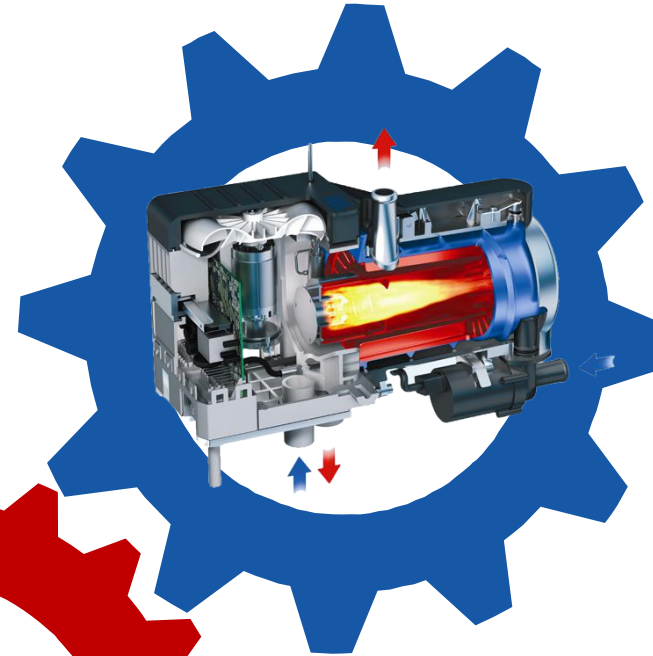
3. Heating solutions for other functional components or design requirements  
Such as: Fuel tank heating, Heat preservation heater for gearbox and  
Heat preservation and heating of battery pack, etc.

# M-DW 8-12 Heater Mission

DW8-12 heater mission



DW8-12, has been given the mission of the times from the moment it was born, this is a milestone product in the history of heater development!



The design concept of "safety, environmental protection, intelligence and efficiency" is fully reflected in DW8-12. The new era will surely carry the mission of the times and solve all your worries.

Solve all heating possibilities, I am ready! Are you ready?



# 感谢您的观看

THANK YOU FOR WATCHING

---

上海蔚柯实业有限公司  
ShangHai VehicleAC Industry Co., Ltd.

Tel : +86-021-58581023

Mobile : 151-3711-8132

E-mail : nichol@vehicleacparts.com

Website: [www.vehicleacparts.com](http://www.vehicleacparts.com)

Operations Center: No. 8-1098, Chuansha Road, Pudong New District, Shanghai, China

Factory Add: No. 52, Hongsong Road, Zhengzhou, Henan, China

CONTACT US